



ministry  
formation







**"People Matter to God!"**





“A Church Reforming to Reach the Lost for Christ”



# Rabbits

- ◆ 1859: Thomas Austin – Barwon Park, Geelong
- ◆ 1953: up to 1 billion
- ◆ 2009: 100 million



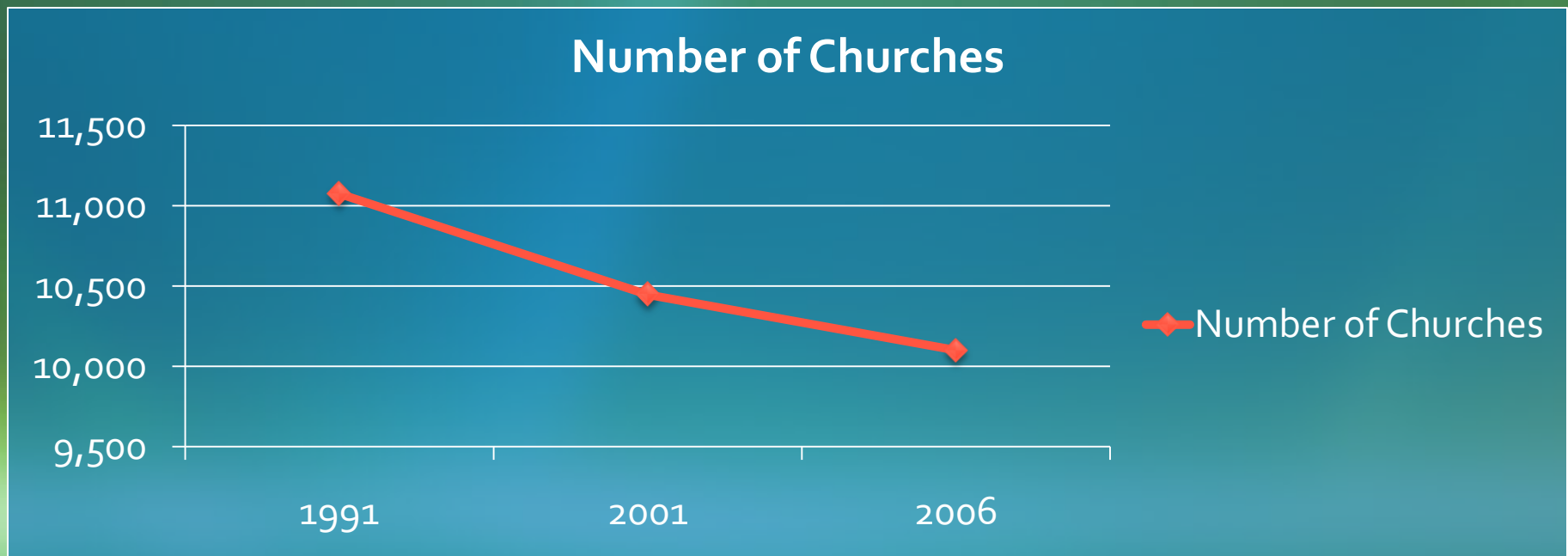


"Really? — my people always say *multiply and conquer.*"

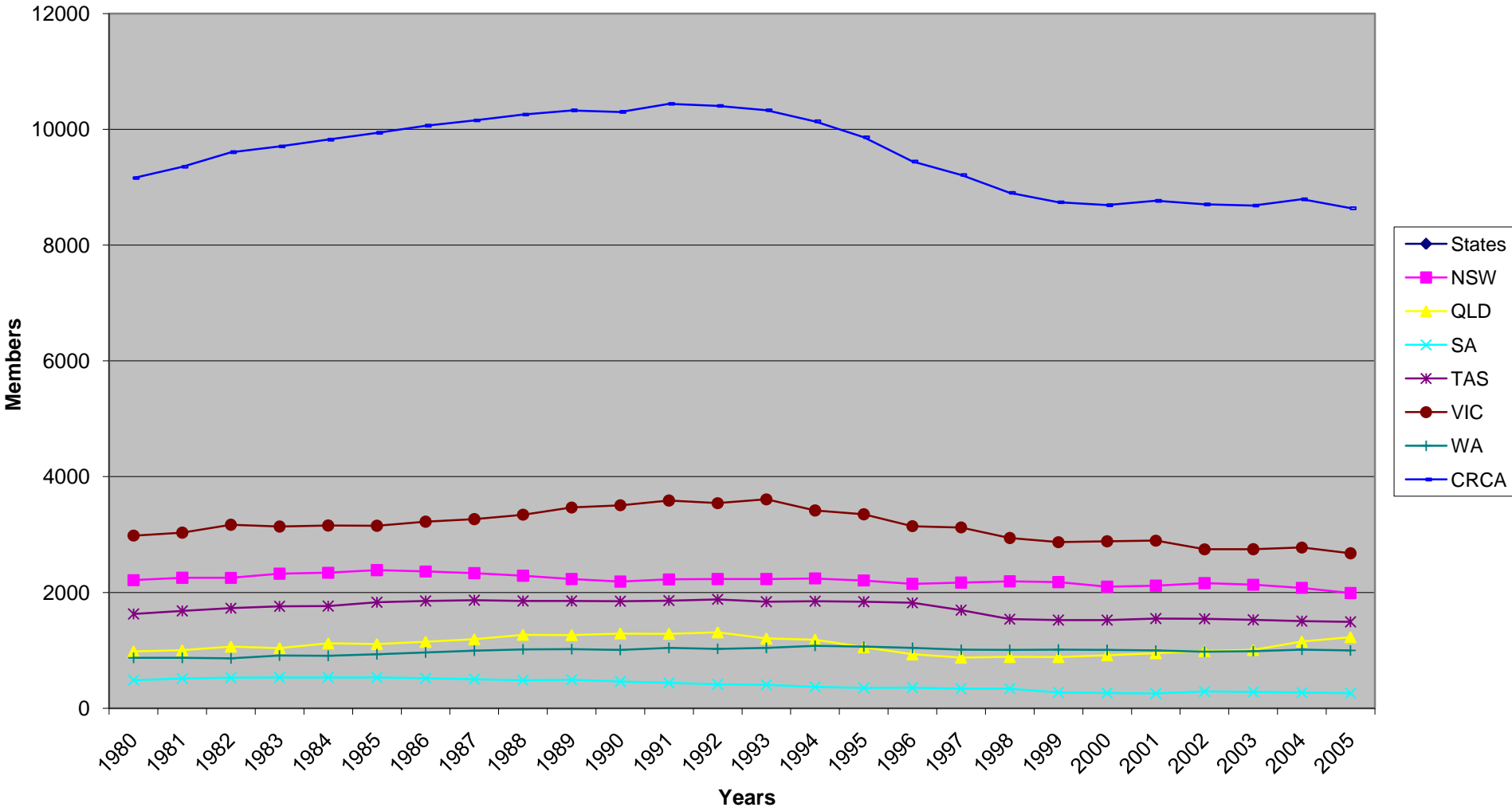


# Reality Check

- ◆ Rabbit population: 100,000,000 +
- ◆ Australian population: 22,370,000 +
- ◆ Growth: 1,500,000 every 3 years
- ◆ 2020: 27-30 million +

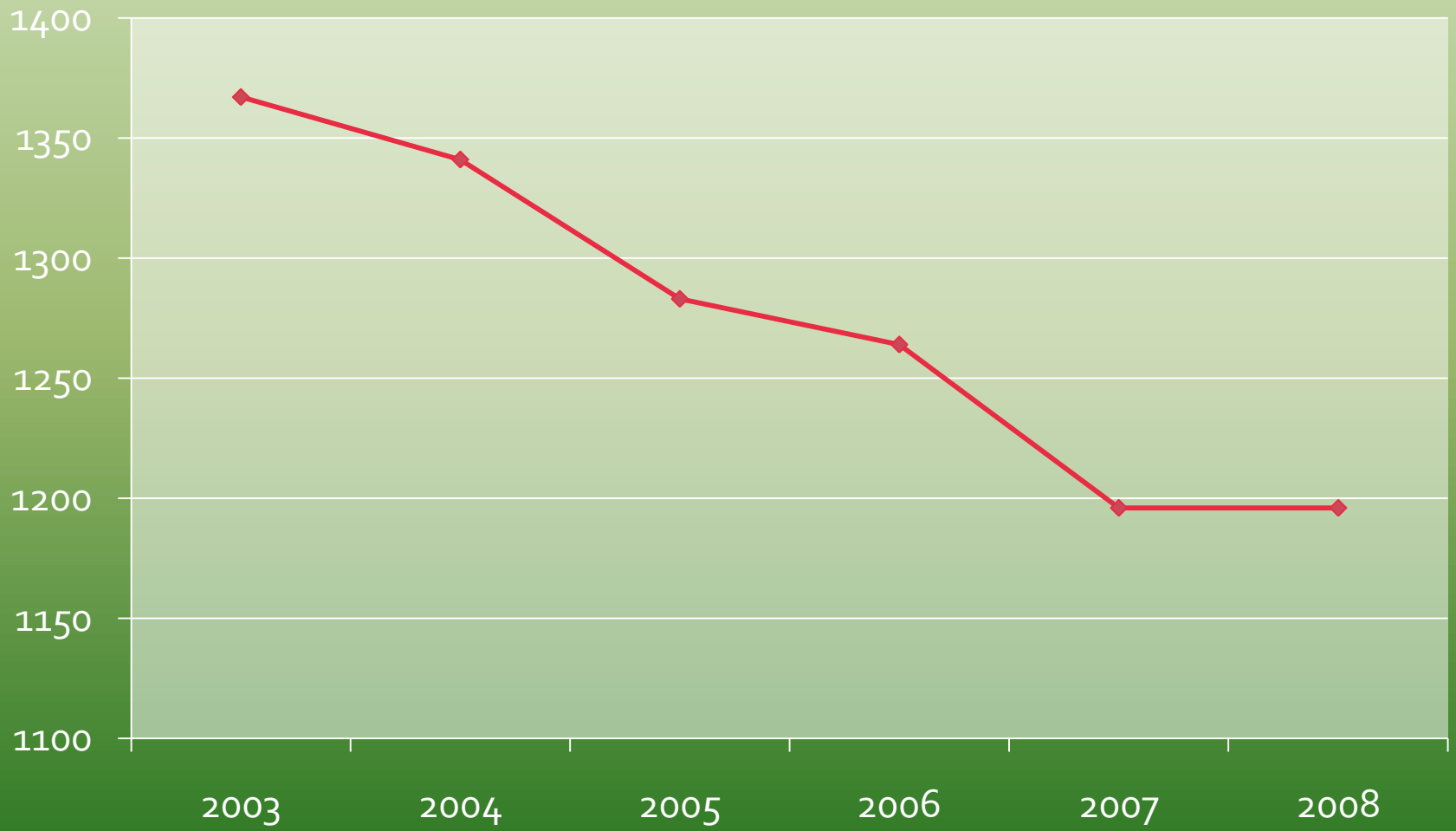


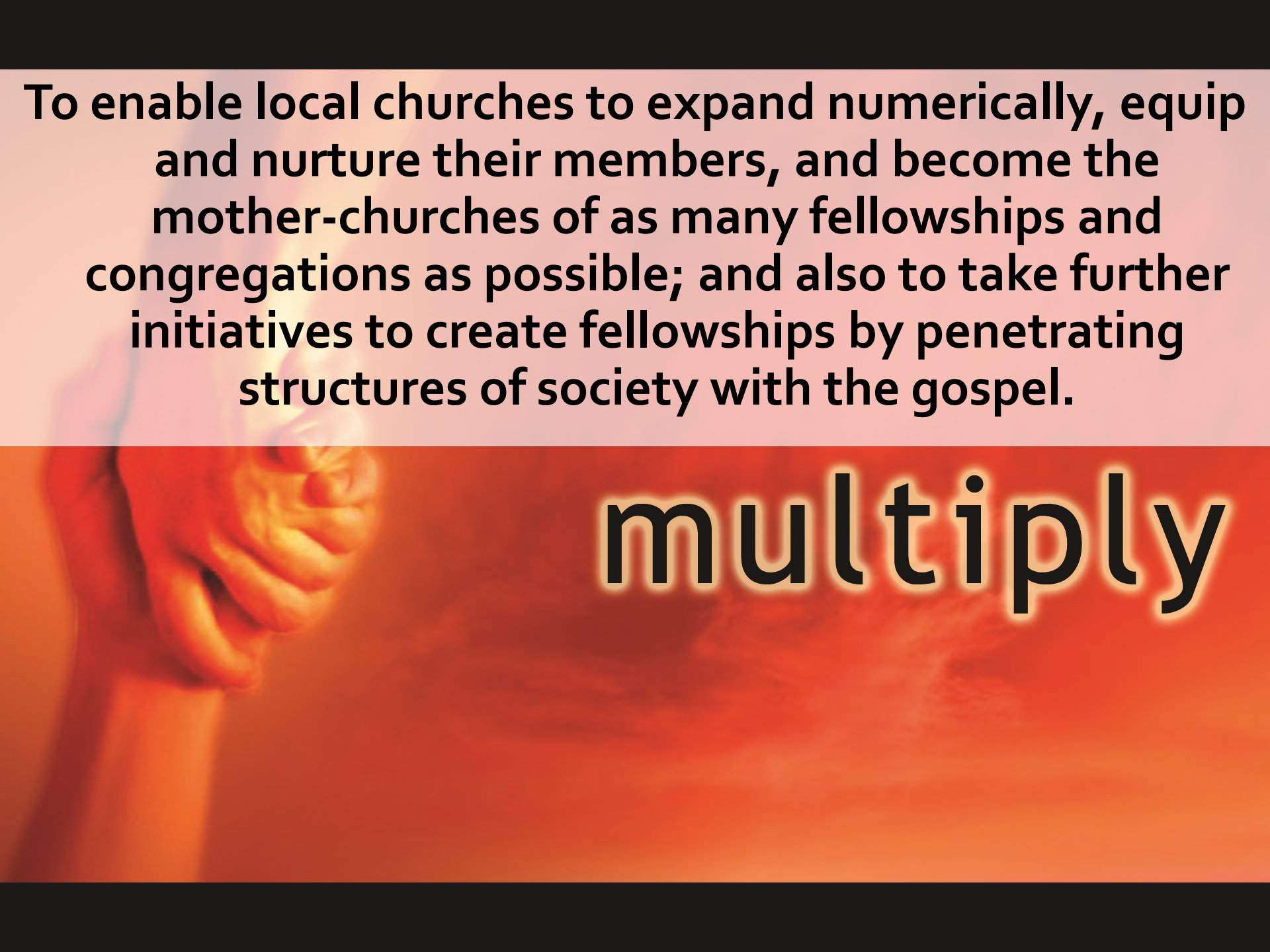
### CRCA Membership 1980 to date





# NSW Statistics



A hand holding a glowing orb, with a warm orange and red background. The hand is positioned on the left side of the frame, holding a bright, glowing sphere. The background is a gradient of warm colors, from dark red at the top to bright orange at the bottom. The overall mood is one of hope and growth.

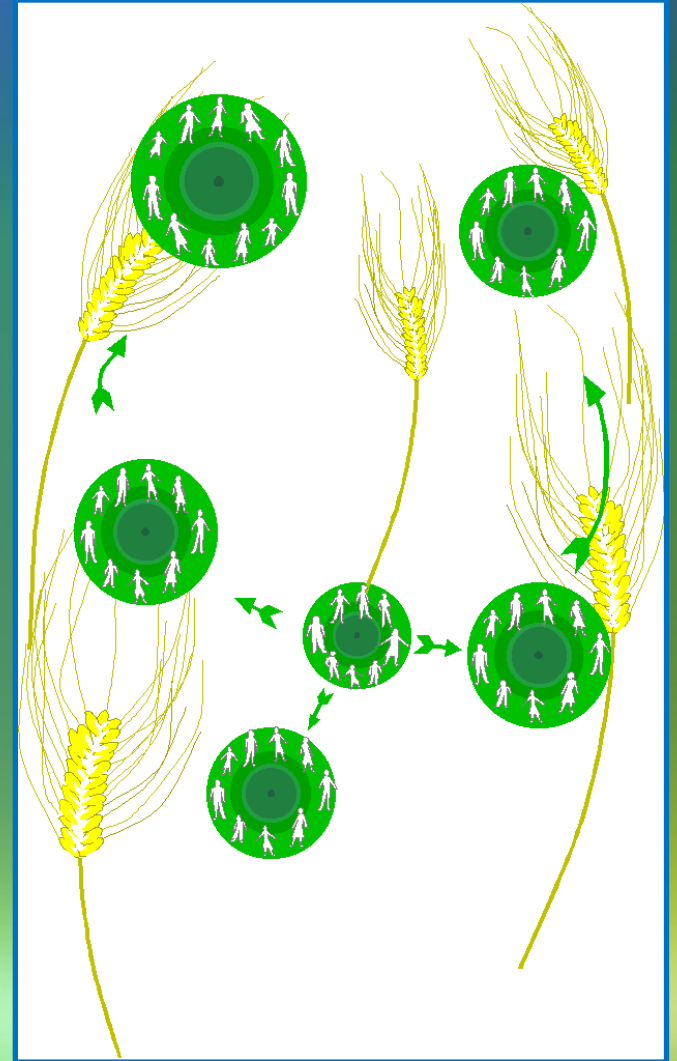
**To enable local churches to expand numerically, equip and nurture their members, and become the mother-churches of as many fellowships and congregations as possible; and also to take further initiatives to create fellowships by penetrating structures of society with the gospel.**

**multiply**



# Expand Numerically

“To enable local churches to expand numerically, equip and nurture their members, and become the mother-churches of as many fellowships and congregations as possible....”





# Glorify God!

- ◆ “Be fruitful and increase in number; fill the earth and subdue it.” (Genesis 1:28)
- ◆ “Go and make disciples of all nations.” (Matthew 28:19)



“When we live this out,  
we glorify our Lord.”



# imagine

all the various parts that make the CRCA,  
working and growing, with creativity and energy,  
toward the one goal of reaching the lost for Christ!



# The Task to Multiply

- ◆ “Church growth is the natural result of church health.” (Rick Warren, *The Purpose Driven Church*, 49)



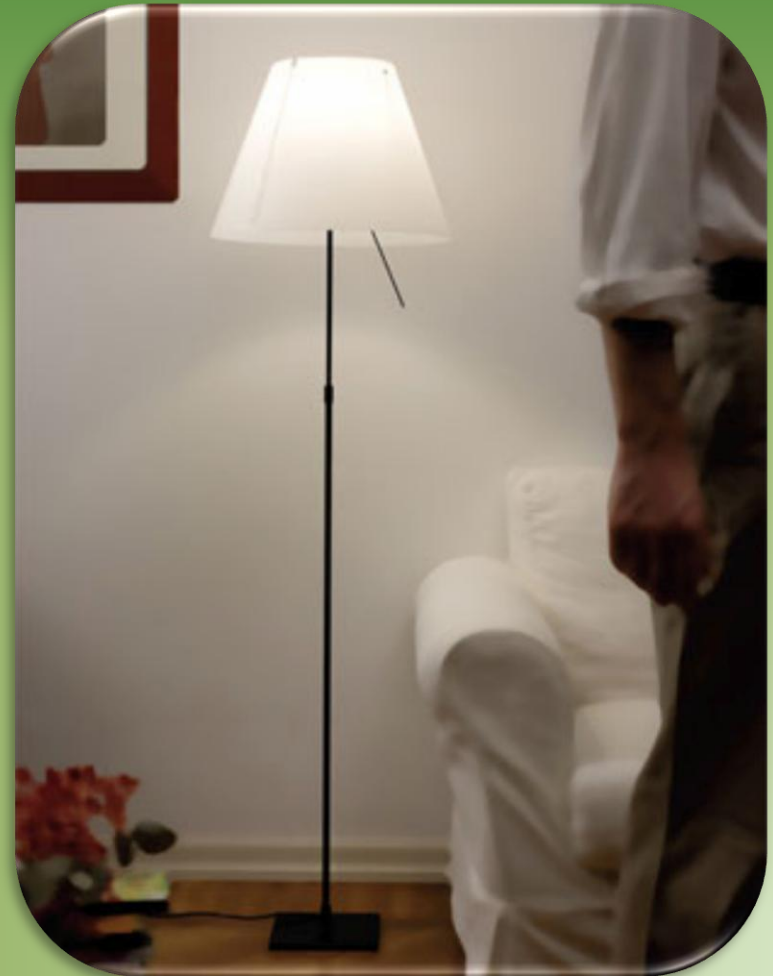
# Parable of the Sower

◆ Mark 4:1-20



# Parable of the Lamp

◆ Mark 4:21-25





# Parable of the Mustard Seed

◆ Mark 4:30-34



# Parable of the Growing Seed

◆ Mark 4:26-29

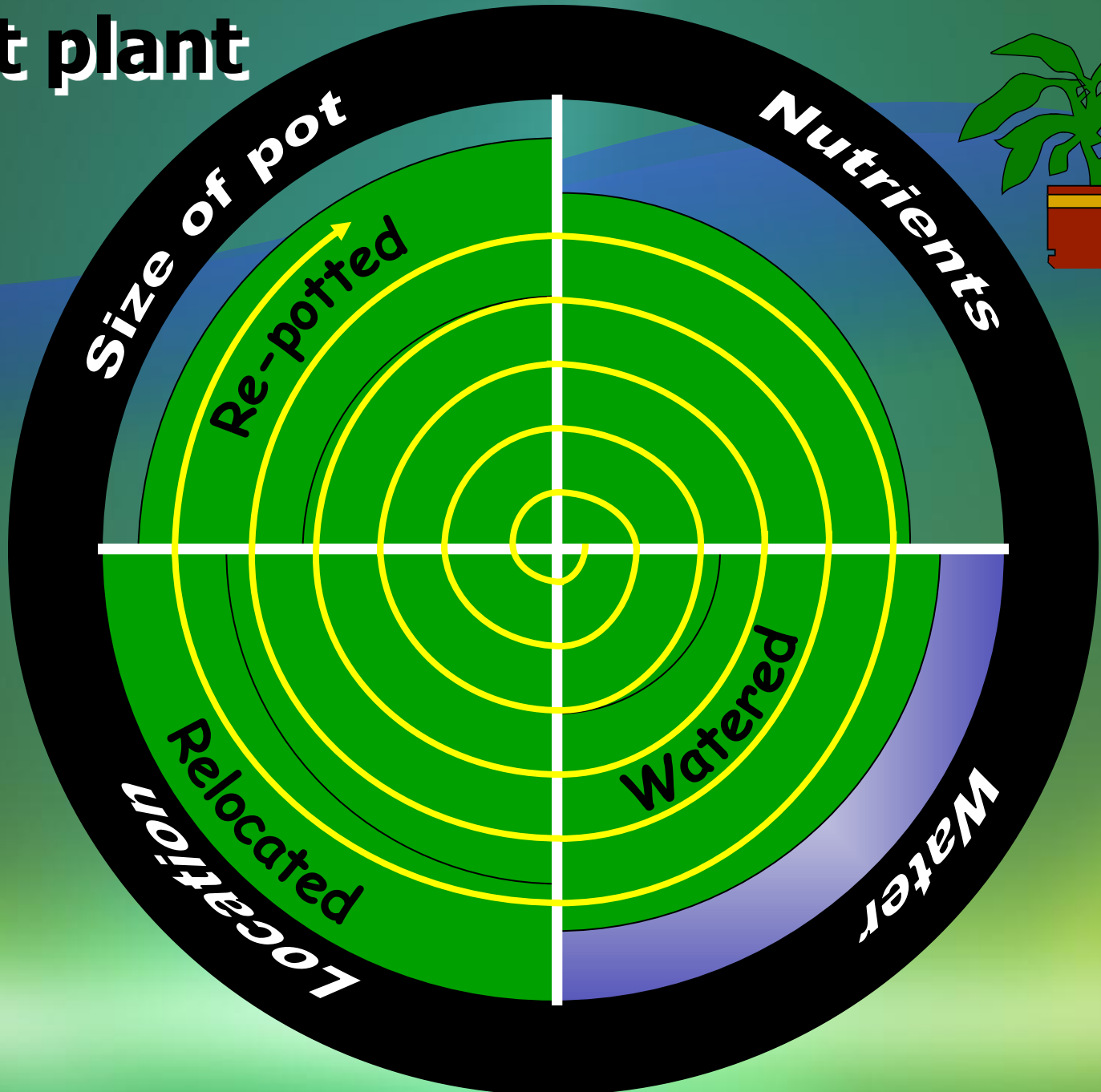


# The Biblical Concept

- ◆ “The kingdom of God is like a farmer who casts seed upon the ground; and goes to bed at night and gets up by day, and the seed sprouts up and grows - how, he himself does not know. The earth produces crops all by itself; first the blade, then the head and then the mature grain in the head.” (Mark 4:26-28)



# A pot plant



# The Marks of the True Church

Belgic Confession Article 29



Pure Preaching of the Gospel



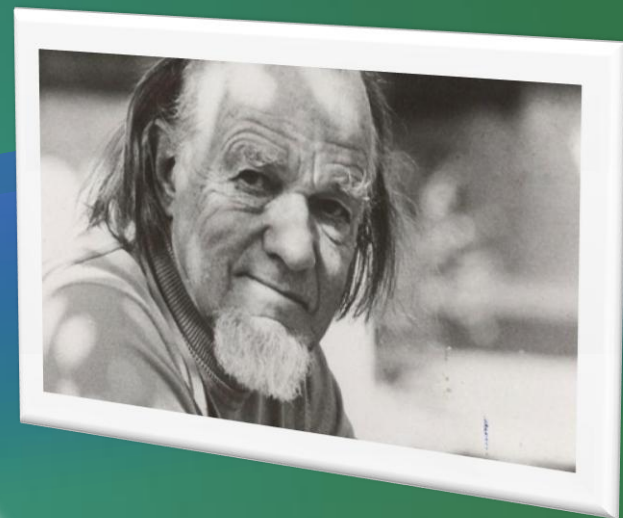
Pure Administration of the Sacraments



Practises Church Discipline

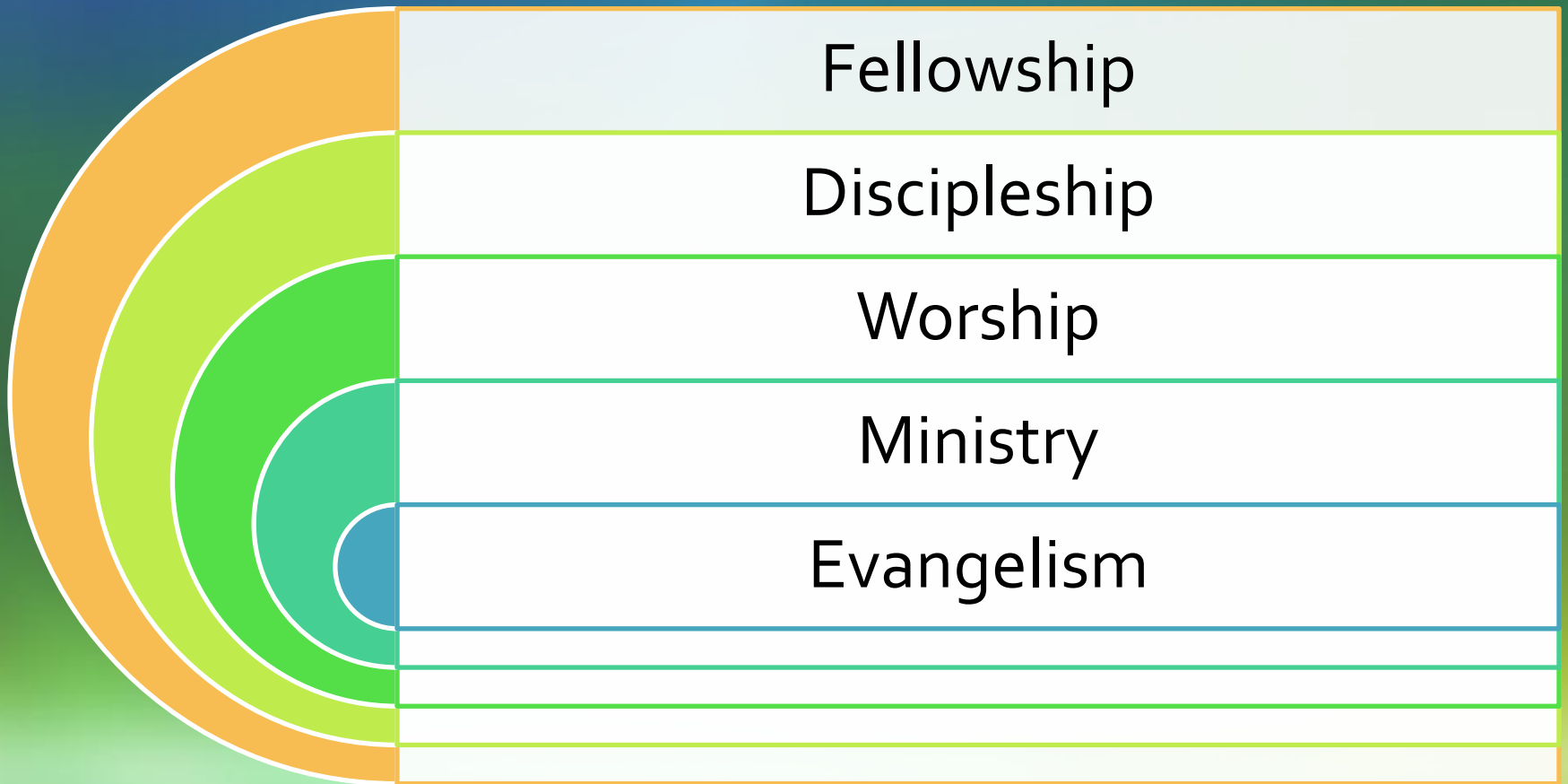
# Francis Schaeffer

1912 - 1984



# The Purpose Driven Church

Rick Warren – Acts 2







# Nine Marks

Mark Dever

---

- ◆ Expository Preaching
  - ◆ Biblical Theology
- ◆ Biblical Understanding of the Good News
  - ◆ Biblical Understanding of Conversion
  - ◆ Biblical Understanding of Evangelism
  - ◆ Biblical Understanding of Membership
    - ◆ Biblical Church Discipline
- ◆ Promotion of Christian Discipleship and Growth
  - ◆ Biblical Understanding of Leadership

# Natural Church Development

Growing and declining churches vary significantly in  
*8 quality areas*

**The key**

*The adjectives*

*Core Growth  
Values*

**Empowering Leadership**

**Gift-oriented Ministry**

**Passionate Spirituality**

**Functional Structures**

**Inspiring Worship Service**

**Holistic Small Groups**

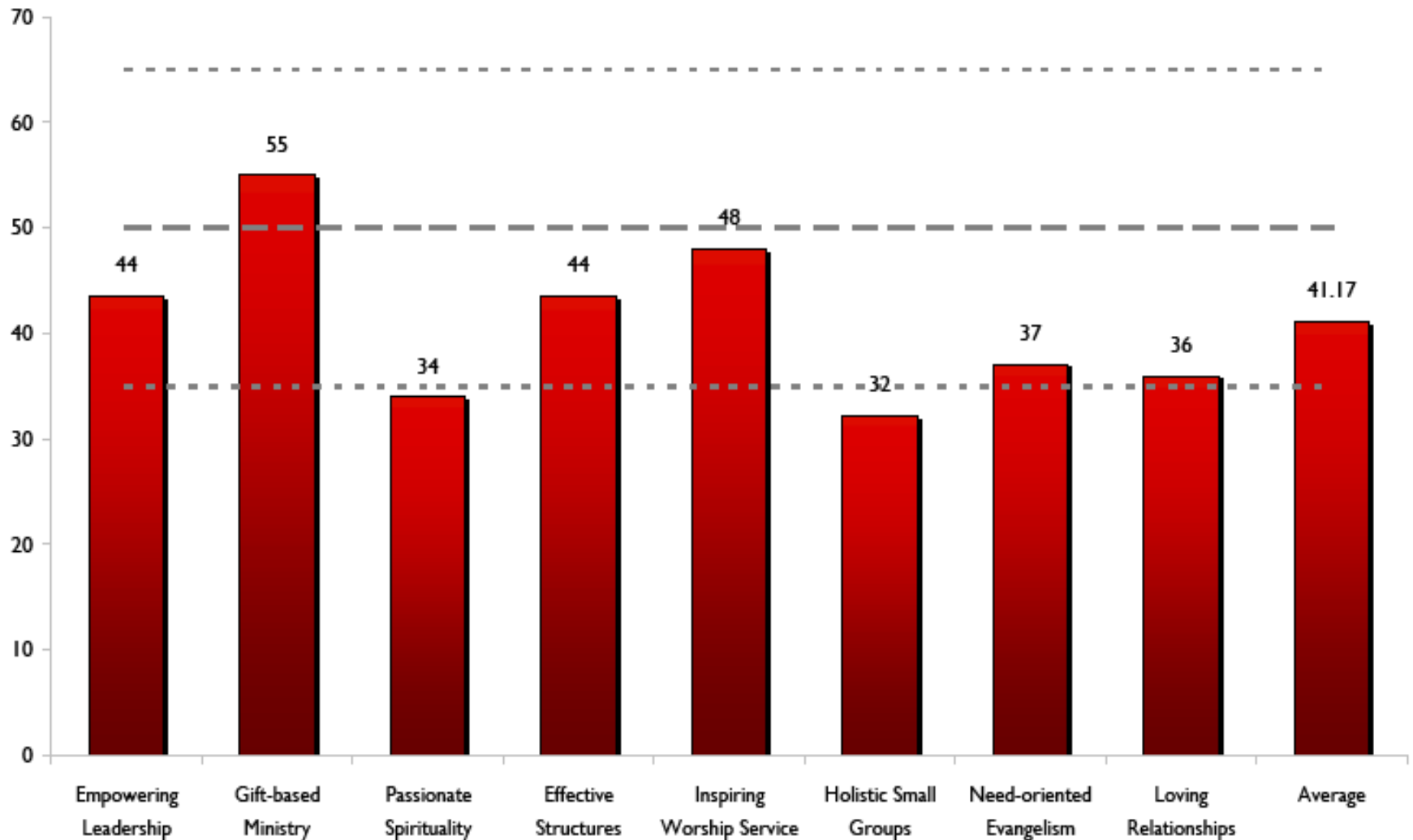
**Need-oriented Evangelism**

**Loving Relationships**



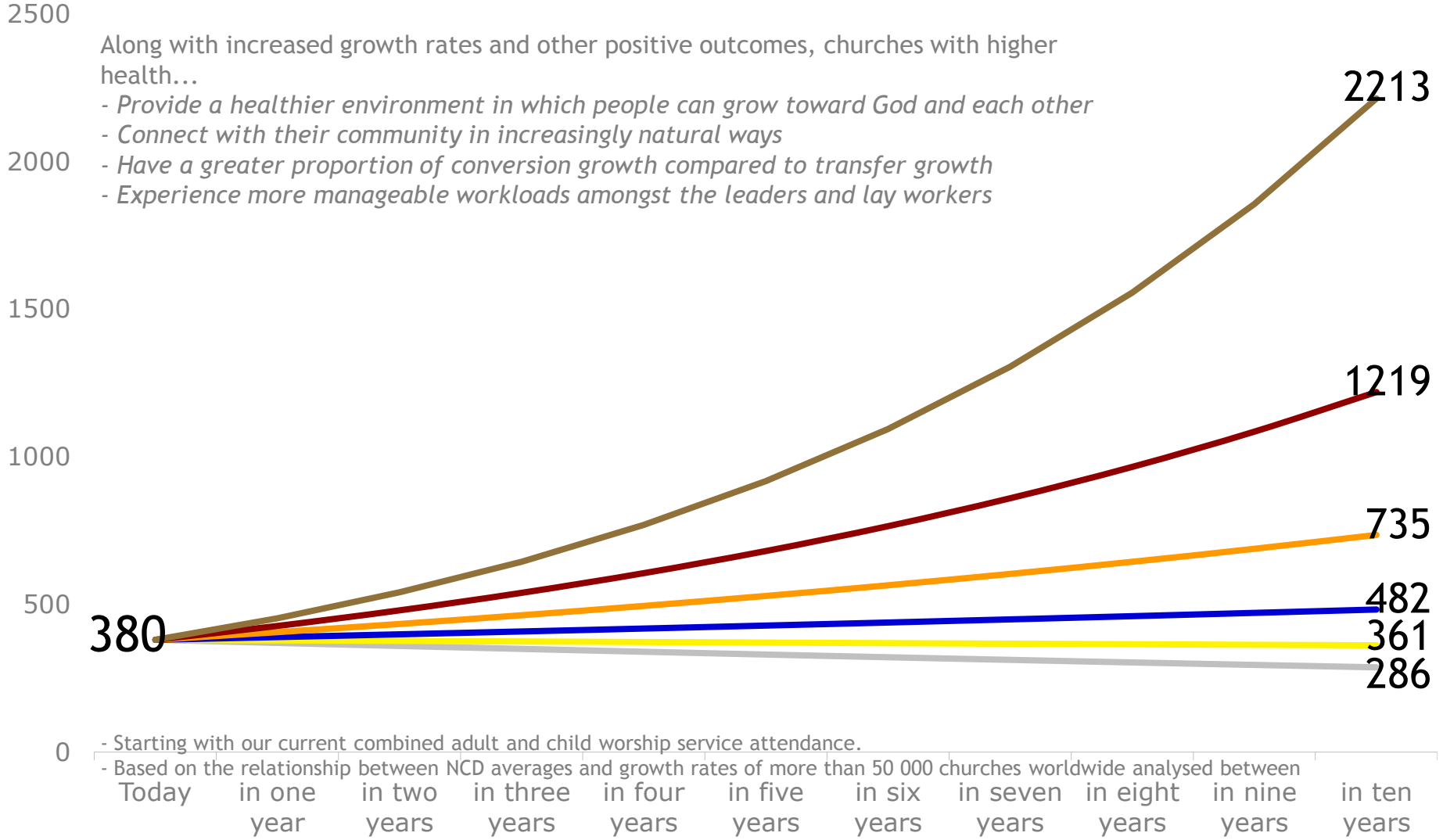
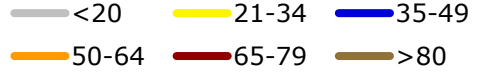
# Quality Characteristic Current Profile

- Current
- ▤ High (65)
- Average (50)
- ▤ Low (35)



# Possibility growth projection

Natural Church Development



Along with increased growth rates and other positive outcomes, churches with higher health...

- Provide a healthier environment in which people can grow toward God and each other
- Connect with their community in increasingly natural ways
- Have a greater proportion of conversion growth compared to transfer growth
- Experience more manageable workloads amongst the leaders and lay workers

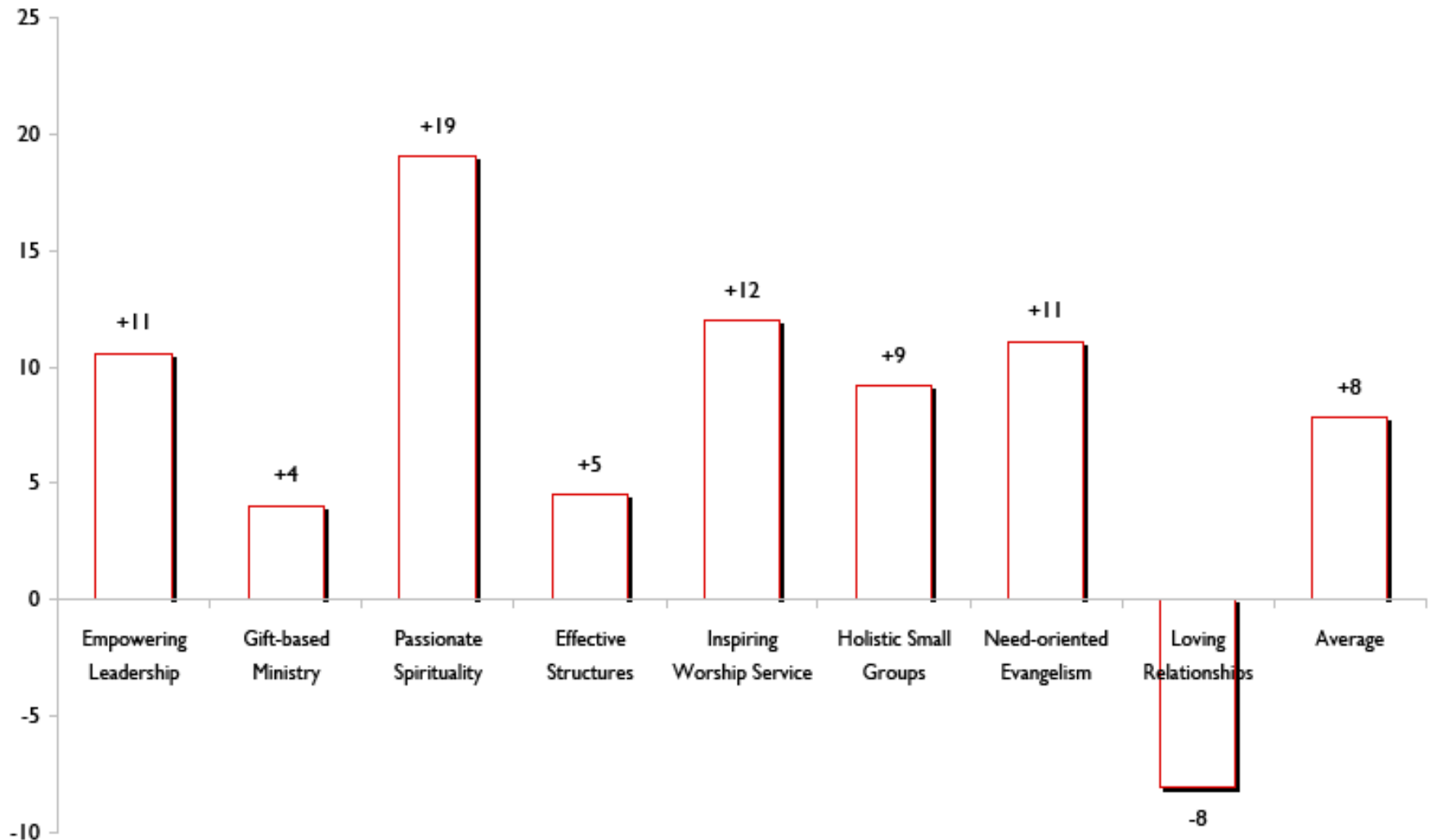
- Starting with our current combined adult and child worship service attendance.  
 - Based on the relationship between NCD averages and growth rates of more than 50 000 churches worldwide analysed between

Today in one year in two years in three years in four years in five years in six years in seven years in eight years in nine years in ten years

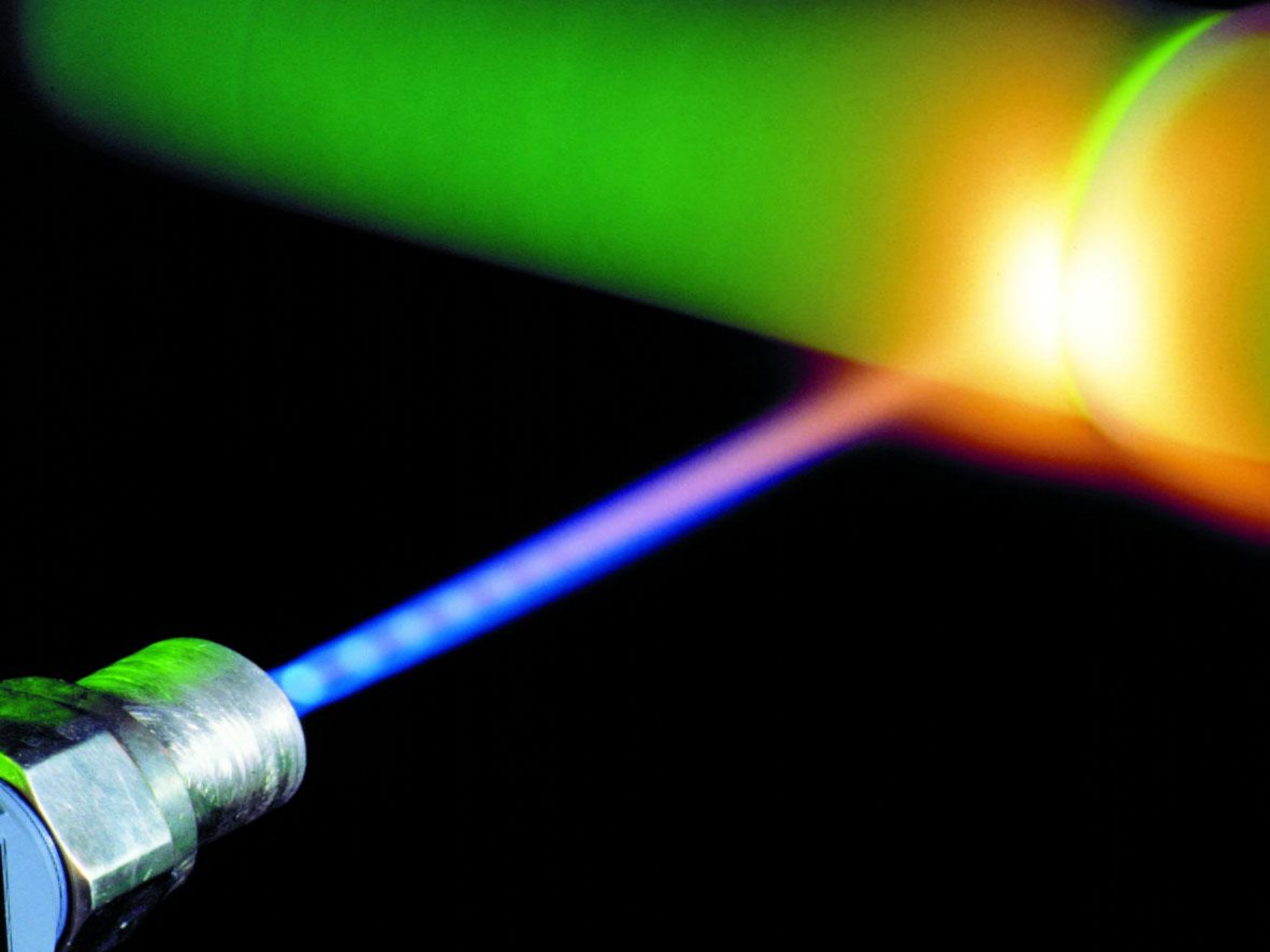


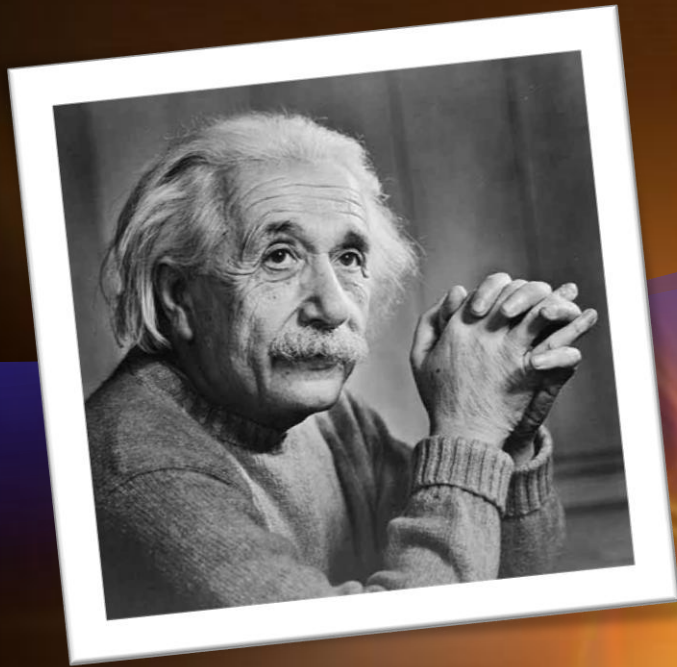


## Change from Previous to Current Profile







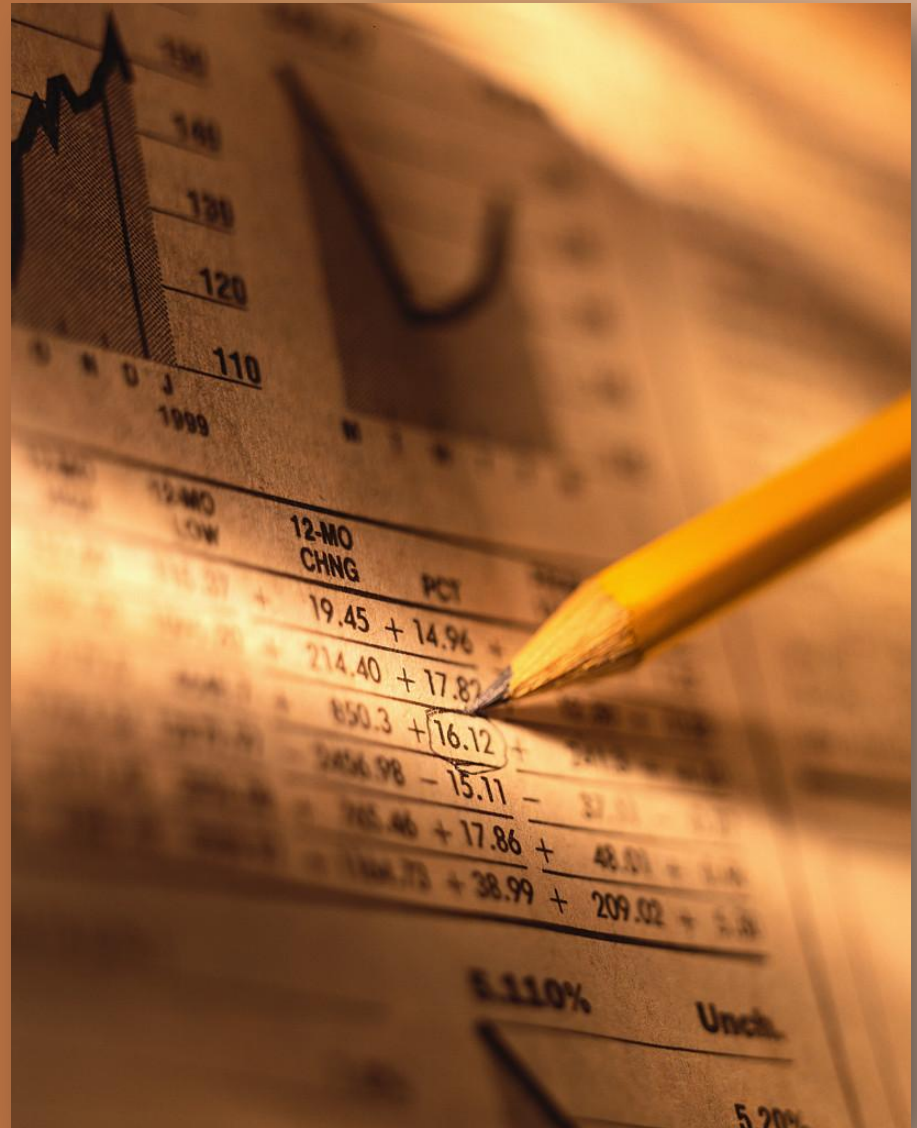


# Albert Einstein

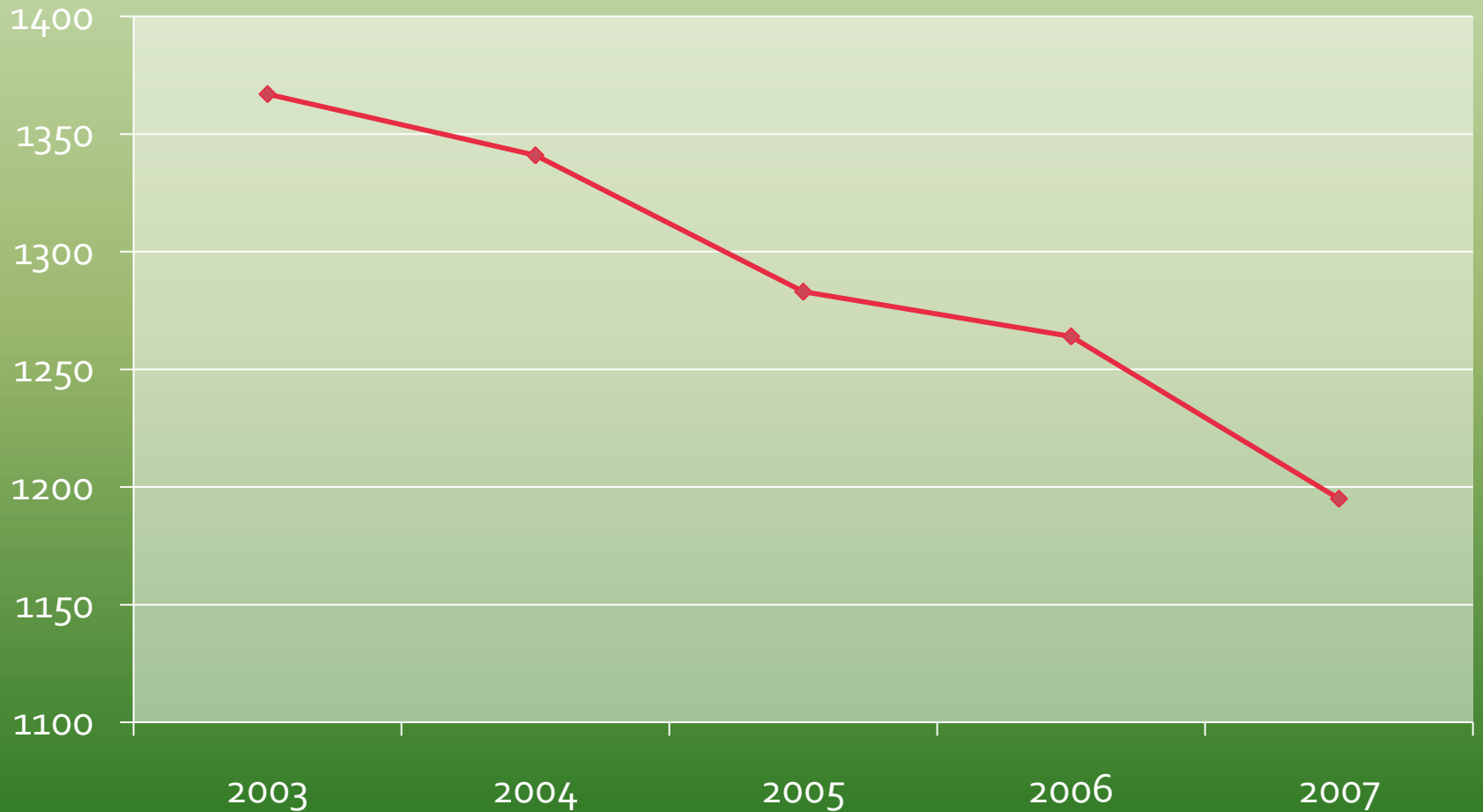
- ◆ **Insanity is doing the same thing over and over again and expecting different results.**



Facts are  
your friends!



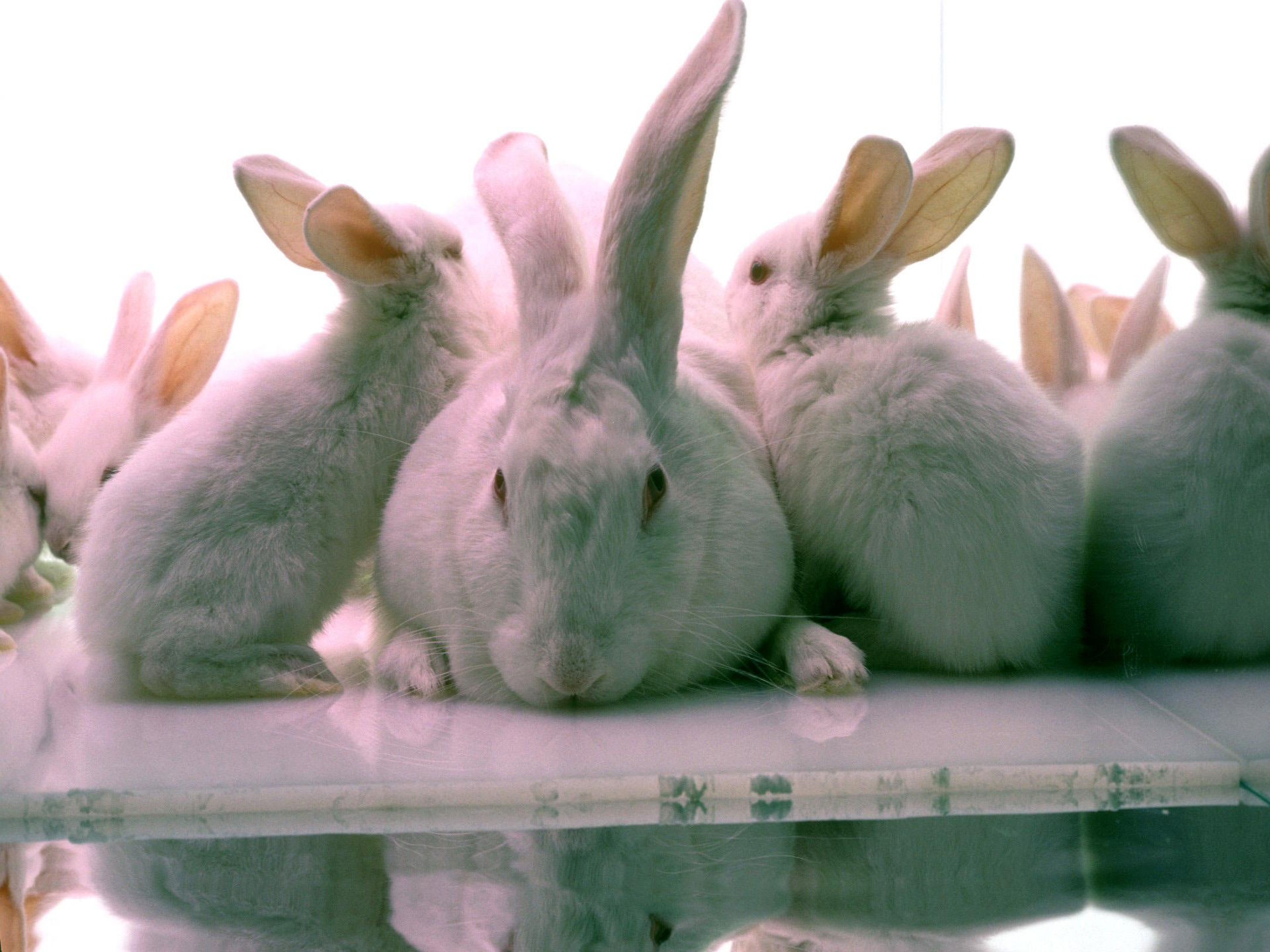
# NSW Statistics



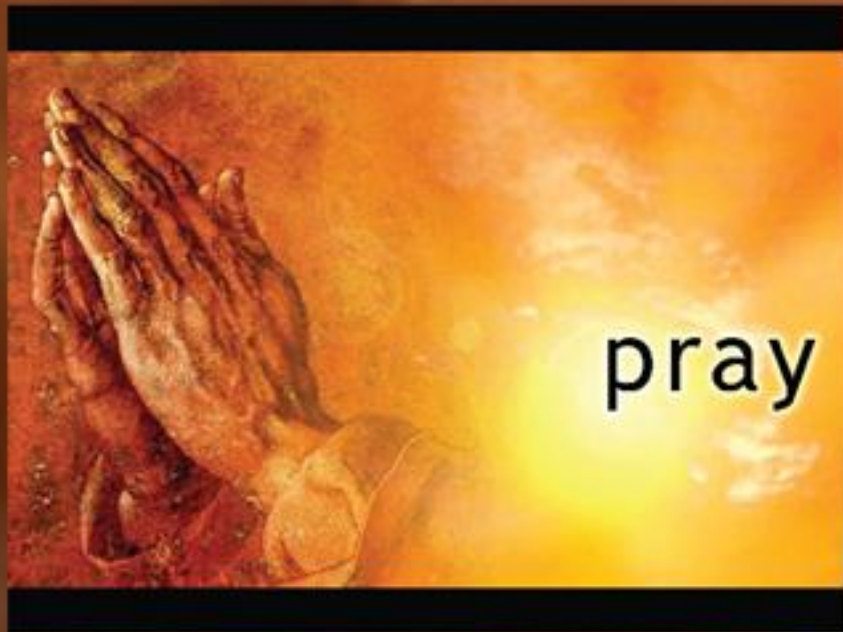
# Get a Health Check Up











pray



multiply



train



align



- ◆ To call upon God for such an outpouring of his Spirit that his people will be assured of his love through his Word, seek to please the Saviour in all things, manifest the godly life and be filled with prayerful and sacrificial compassion for the lost in all the world.



# Grace CRC – Perth, WA





- ◆ To multiply the number of well-trained persons (ordained, non-ordained, full time, part time, voluntary) lovingly dedicated to the creation and development of such fellowships and congregations by proclaiming the gospel.





Office

task 3

Steve

Scott



- **To reform continually the life of the denomination (including our church ethos, customs, church order, use of resources, denominational committees, support staff and agencies) to encourage and enable the fulfilment of the fundamental aim.**



# Ministry Formation

## Pray Spiritual Formation

Spiritual Direction and Planning  
Spiritual Development: Individual, Local Church, Classis, Synod

## Multiply Church Formation

Church Plants, Local Mission, Overseas Mission,  
Ecumenical, Compassion

## Train Disciple & Leader Formation

Youth Discipleship, Discipleship, Ministry Development,  
Publishing, Theological Education, Ministry Entrance

## Resource & Support

Administration, Management, Stewardship

# Ministry Formation

**Healthy Churches  
serving  
God's Mission**

# Brochure

## INTENTIONAL MINISTRY FORMATION

Developing our effectiveness in  
ministry and mission

### ministry formation

Our churches agreed at  
Synod in May 2006 that we  
would work together to  
increase our Gospel impact for  
God's glory by being  
intentional in developing  
ministry and mission.

## Securing our Gospel impact

### ministry formation

1. Pray
2. Multiply
3. Train
4. Align

Four priorities have been recognised that are essential and strategic to fulfilling our Gospel calling.

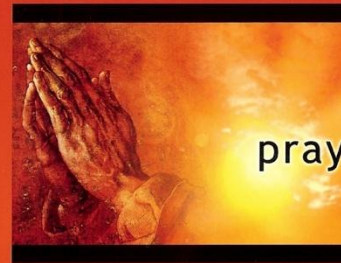
Paul, in his letter to the Ephesian Christians, reminds them that God's interest is in a "beautiful bride". What will the church look like as a beautiful bride? In every period of history, there are characteristics, behaviors and attributes that will enable the "bride" to reflect this wonderful picture, and to draw those who don't know God into a living, loving and vibrant relationship with Himself.

**Our churches have identified four key focus areas:-**

1. Pray
2. Multiply
3. Train
4. Align

## Our fourfold task

What does this fourfold task look like? If a picture speaks a thousand words, then continue reading.



Can you imagine our denomination focusing prayer around a single goal? To pray for the Gospel to impact our churches our land! What would happen if daily our heartfelt prayer was for the lost of the world? The prayer reminds us to our total dependence on God

*...God is inviting us to join him on a mission, it is the invitation to be part of a movement not a club.*

- Reggie McNeal

## multiply

Imagine communities of faith as healthy, vital and growing! It is natural and healthy for us to grow and develop, this is also true for the church. Consider the impact and energy that will be unleashed when we see ministries multiplied and missional initiatives penetrate our society with the Good News of Jesus!

## train

Imagine our communities of faith as training centres where the gifts, passion and missional potential of every disciple could be realised! To know that the training of leaders – ordained, non ordained, full time, part time and voluntary, dedicated to leading us into God's mission.





pray



multiply



train



align

## SECURING OUR GOSPEL IMPACT

### Our Vision:

In response to Christ's command, and to what He has called his church to do and to be, we reconfirm our vision to be: "A Church Reforming to Reach the Lost for Christ".

[READ MORE](#)

### Our Mission:

To multiply Bible-based Christian fellowships and congregations which equip and nurture their members and grow throughout Australia and beyond.

[READ MORE](#)

### Our Fourfold Task:

In submission to the Lord Jesus Christ and his command to make disciples of all nations:

[READ MORE](#)

### Our Strategy:

Preamble:  
These recommendations and suggestions are about:  
• The priority of the local church: the local church is God's appointed agent of hope for the world. When we

[READ MORE](#)